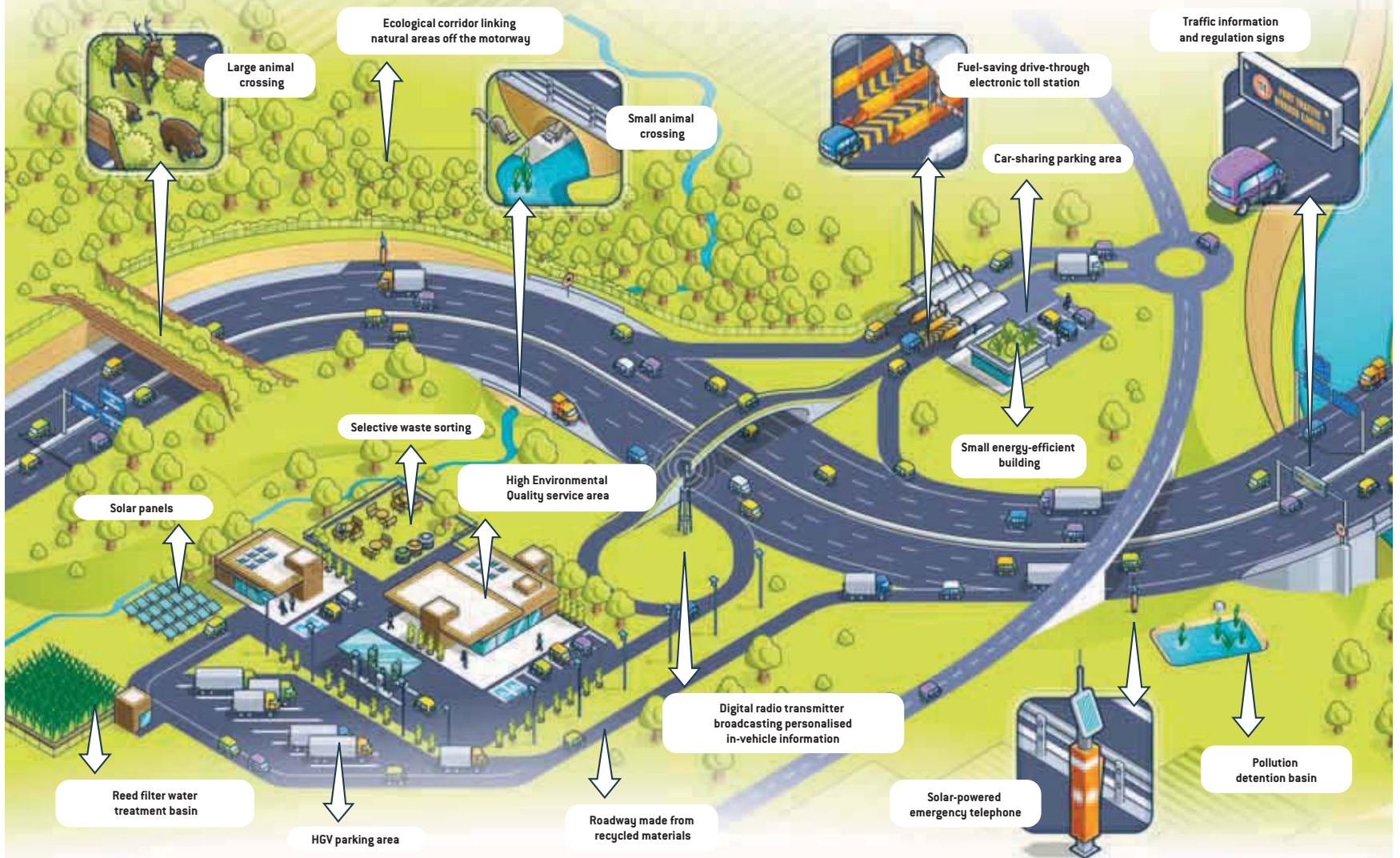
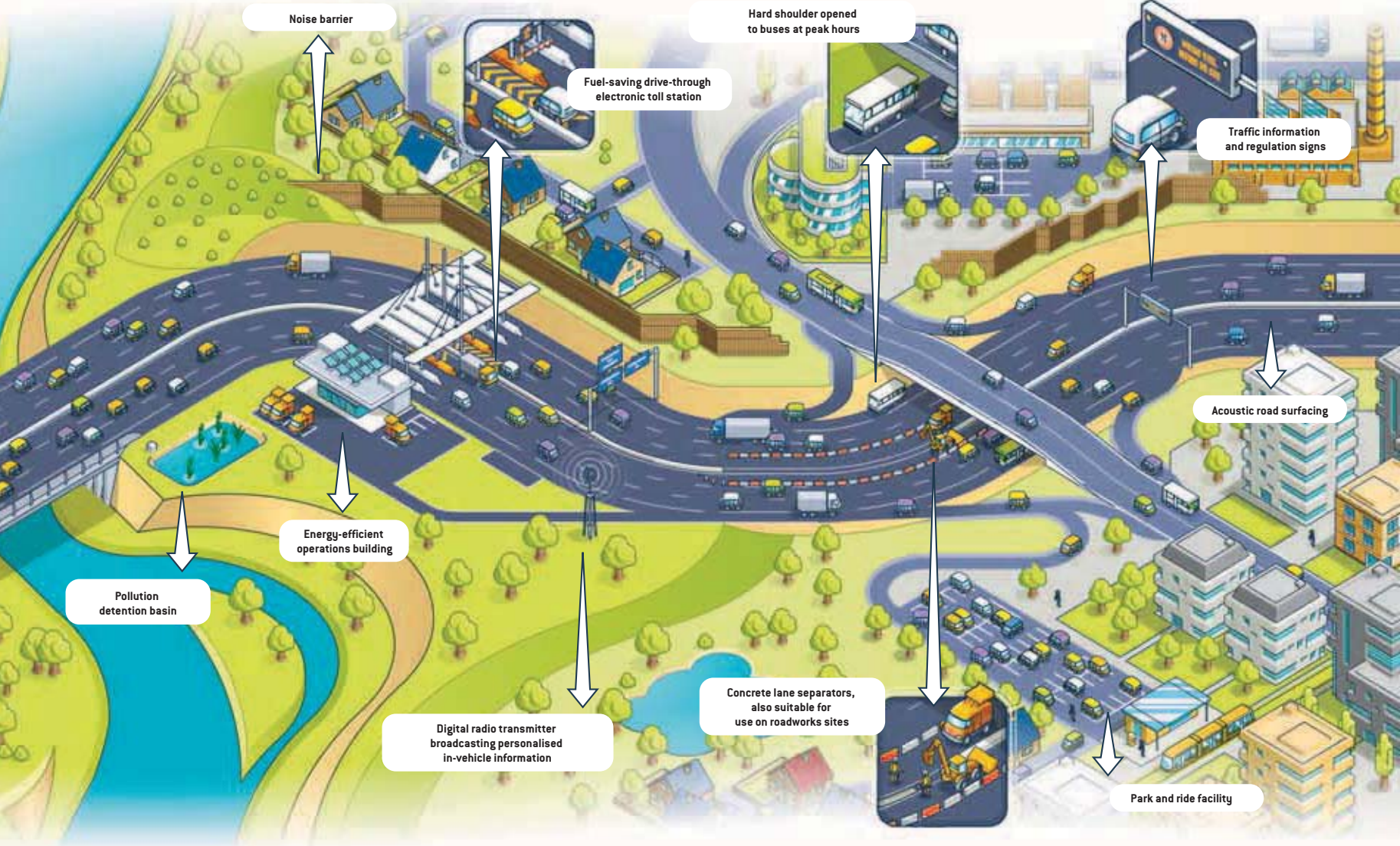


# TOMORROW'S MOTORWAY WILL BE GREENER



Motorways are already adapting to the principles of eco-design and eco-management. In open country or urban settings alike, motorways will do more to protect the natural environment, to be better neighbours and provide greater convenience to users, while maintaining their already high safety levels. They will also cut their carbon emissions to combat the greenhouse effect. Some solutions will be more apparent to the eye than others, but they will undoubtedly change the face of the motorway as we know it: equipment, innovative solutions, eco-materials, etc. Some of them are pictured below.



View of a suburban motorway